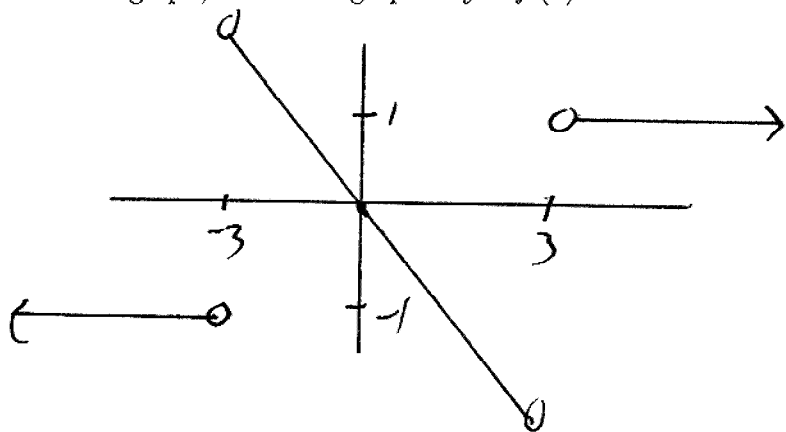
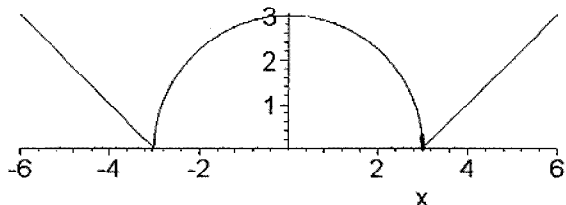


Math 1260 Quiz #13 - June 20, 2006

1. Below is the graph of $y = f(x)$. Next to the graph, sketch the graph of $y = f'(x)$



2. Let $y = \frac{3}{x^5} - \frac{2}{x^3} + \sqrt{x}$. Find $\frac{dy}{dx}$.

$$y = 3x^{-5} - 2x^{-3} + x^{\frac{1}{2}}$$

$$\frac{dy}{dx} = \left[-15x^{-6} + 6x^{-4} + \frac{1}{2}x^{-\frac{1}{2}} \right]$$